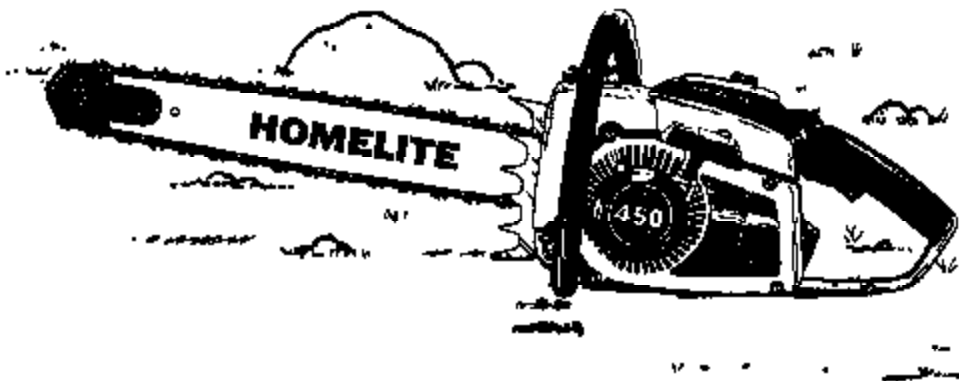


# ILLUSTRATED PARTS LIST

PART NO. 24897 REV. 1  
Printed in U.S.A.  
Price 35¢



**HOMELITE®  
450 SERIES  
PROFESSIONAL  
CHAIN SAWS**



UT10425  
UT10426

**HOMELITE** **TEXTRON**

Homelite Division of Textron Inc



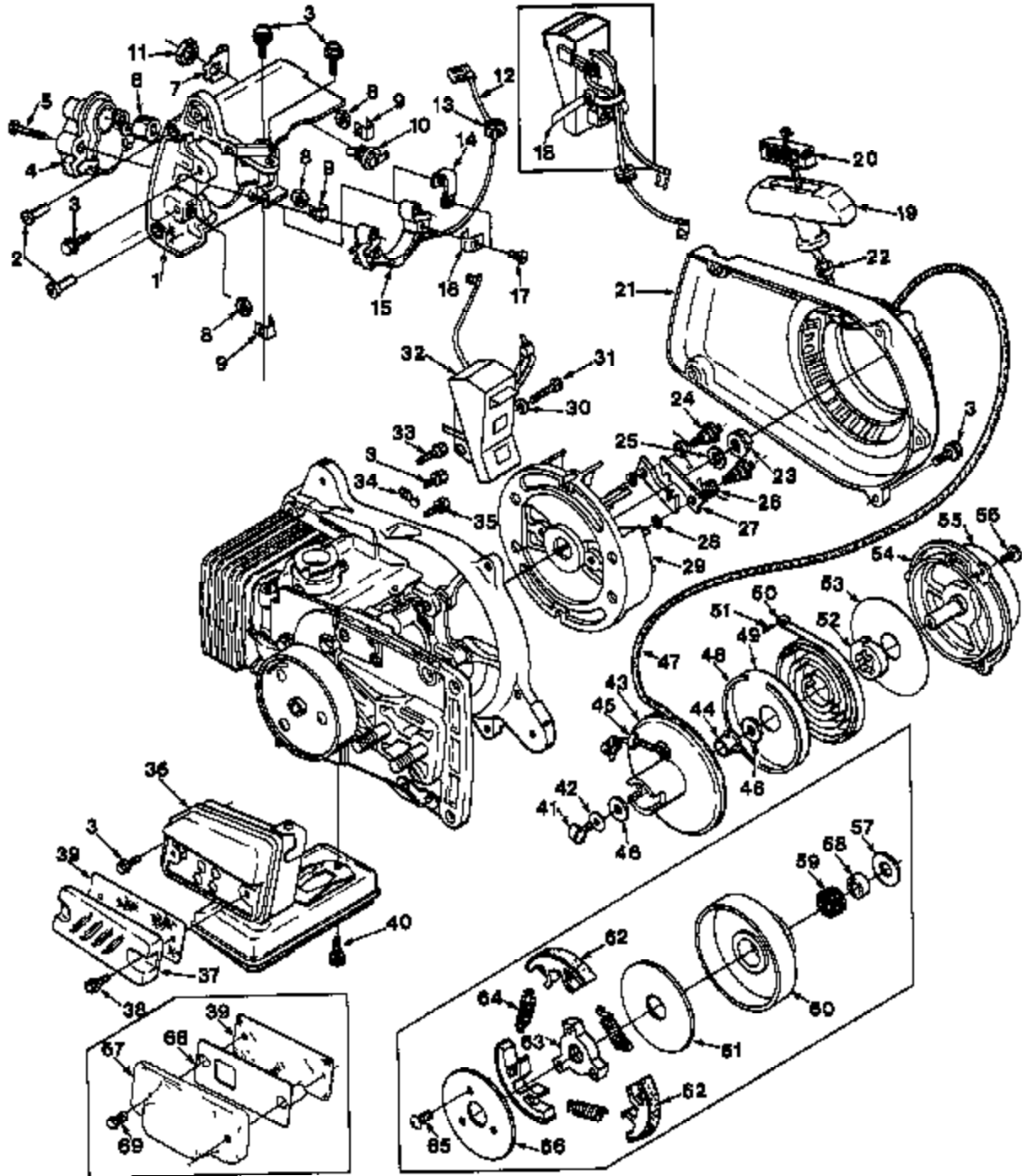
450

FIGURE 1

No.	Description	Part No.	Qty.	No.	Description	Part No.	Qty.
1	GRIP (450 HG, SL only)	70019-1A	1	55	NUT- Hex, 10-24 gripco	81208	9
2	PIN- Groove (HG, SL only)	12462	1	57	SCREW- Hex, Sema 10-24 x 1/2"	86048	1
3	LEVER- Choke	12520	1	58	PLATE- Spiked bumper (450W)	A-12481-B	1
4	ROD- Choke	12549	1	59	PLATE- Spiked bumper (450, 450SL)	A-12480-B	1
5	BOOT- Choke rod	88348	1	Items #58 & 59 include:			
6	PIN- Groove, choke	12423	1	60	NUT- Hex 12-24	81068	2
7	PIN- Trigger	88848	1	61	WASHER- Lock #12	70801	2
8	PIN- Groove, throttle latch	12461	1	62	SCREW- Pan, 12-24 x 1/2"	80863	2
9	SCREW- Drive (HG, SL only)	80001	1	63	NUT- Hex, flange 3/8-16	12880	2
10	SPRING (HG, SL only)	12467	1	64	COVER- Drivecase (450 HG, 450W)	A-12334-1	1
11	LOCKOUT (HG, SL only)	12330	1	NOTE: See Figure 4 for 450SL Drivecase cover			
12	SPRING- Torsion, throttle latch	12464	1	Includes:			
13	SCREW- Set (starting speed adj.)	12440	1	65	ADJUSTER- Guide bar	A-70694	1
14	LATCH- Throttle	12464-1	1	66	PIN- Guide bar adjuster	93038	1
15	TRIGGER- Throttle	12362	1	67	PLATE- Guide bar (outer)	70400	1
16	SPRING- Throttle trigger	12441	1	68	BUSHING	70693	1
17	ROD- Throttle	12350	1	69	SCREW- Adjuster	A-12748	1
18	BOOT- Throttle rod	67694	1	70	COVER- Gear	12134	1
19	COVER- Air filter	A-70067-B	1	71	SCREW- Pan, 8-32 x 3/8"	80571	2
Includes:				72	SCREW- Truss hd. 6-32 x 3/8"	80546	1
20	NUT- Air filter cover	A-67689-2	1	73	PLATE- Guide bar (inner)	70399	1
21	RING- Retaining	88319-A	1	74	BRACE- Throttle handle	12348-2A	1
22	BRACKET- Cover mounting	A-83267	1	75	SCREW- Hex, Sema, 10-24 x 7/8"	88032	1
23	INSERT- Air filter cover (solid)	12433	1	76	SCREW- Hex, Sema, 8-32 x 3/8"	88041	4
24	SCREW- Pan, 8-32 x 1/4"	80575	2	77	SNUBBER- Rear	A-12803-A	1
25	INSERT- Air inlet (notched)	12980	1	78	SHIELD- Muffler	A-70285	1
26	FILTER ELEMENT- Air	94106	1	Includes:			
27	SCREW- Hex, Sema, 10-24 x 2 21/64"	70027	2	79	SEAL	70377	1
28	CARBURETOR (SDC-64C)	A-70782-B	1	80	CUSHION	70376	1
29	SPACER- Carburetor	12340	1	81	GRIP- Throttle handle (450W)	70019-A	1
30	COVER- Throttle handle	12351	1	82	BUMPER	12096	2
31	SCREW- Hex, Sema 10-24 x 5/8"	88050	6	83	HANDLE- Throttle	A-70053-C	1
32	GROMMET- Carburetor adjustment	12410	1	(includes:			
33	SCREW- Idle speed adjustment	12783	1	84	LINE- Oil	A-70287	1
34	SPRING- Idle speed screw	12784	1	Includes:			
35	HANDLE BAR- Full wrap-around (450W)	A-83933	1	85	GROMMET	63312-1	1
Includes:				86	NUT	25302	1
36	BUSHING	88187	1	87	SLEEVE	25301	2
37	SCREW- 600 hd. 10-24 x 1"	82246	4	88	LINE- Pulse 3/4"	83167-13	1
38	HANDLE BAR- Flush-cut (HG, SL only)	A-84077-A	1	89	VALVE- Outlet check	A-86077	1
39	TUBING- 11 1/4" (manual oiler pick-up)	83112-45	1	90	VALVE- Inlet check	A-12887	1
40	GROMMET- Fuel line	88046	1	91	PLUNGER- Manual oil pump	A-87236-A	1
41	TUBING- (fuel pick-up) 10 1/2"	84772-42	1	Includes:			
42	TUBING- 10 1/4" (auto. oiler pick-up)	A-85202	1	92	"O" RING	66406	1
43	CAP- Fuel filler (with 89501 Gasket)	A-89500-A	1	93	ROD- Plunger	A-84094	1
44	CAP- Oil filler (with 12126 Gasket)	A-12222	1	Includes:			
Items #43 & 44 include:				94	NUT- Plunger	85082	1
45	VALVE- Check (duck bill)	88461	1	95	BUTTON- Manual oiler	85064	1
46	FILTER- Porous metal	88454	1	96	"O" RING	69074	1
47	CHAIN- Bead	88502	1	97	STOP- Chain	70705	1
48	RETAINER	88503	1	98	SCREW- Sema hex hd. 8-32 x 1/2"	88042	2
49	SCREW- Pan hd. 6 x 1/4"	82266	1	99	HAND GUARD	A-83968	1
50	FILTER- Oil	A-84263	2	Includes:			
51	SCREW- Hex, Sema 10-24 x 3/4"	88051	4	100	WASHER- Flat	94867	1
52	ISOLATOR- Vibration	A-70421-A	5	101	WASHER- Belleville	70788	1
53	FILTER- Fuel	A-59251	1	102	SCREW- Shoulder	93914	1
Includes:				SAFE-T-TIP (Not Shown)			
54	FILTER- Felt	88263-1	1	Includes:			
55	TANK- Fuel & Oil	A-12385-3B	1	SCREW- 1/2-20 x 5/8	82336	1	

# 450

FIG. 2

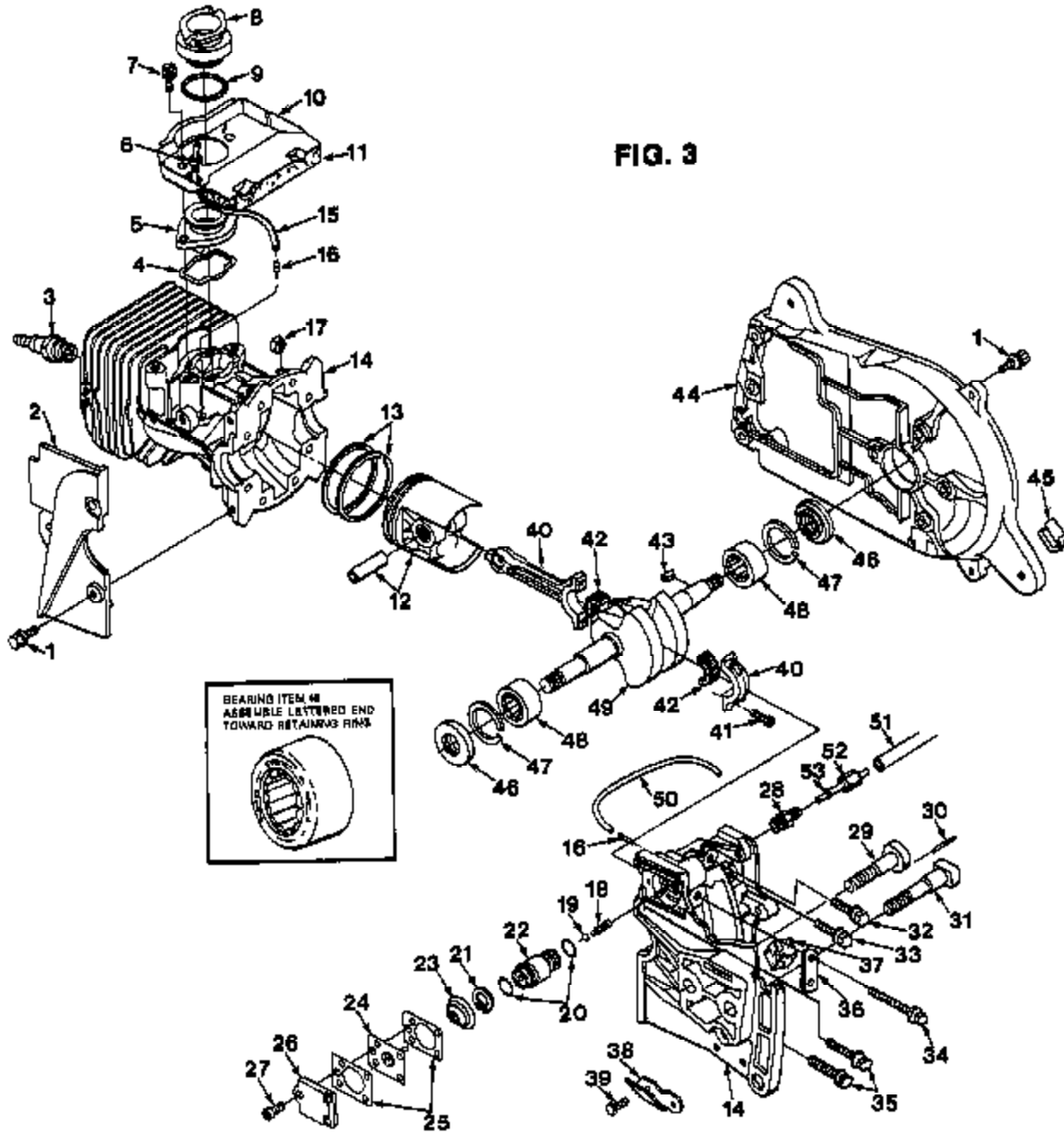


## 450

FIGURE 2

No.	Description	Part No.	Qty.	No.	Description	Part No.	Qty.
1	SHIELD- Cylinder	A-12408-A	1	33	SCREW- Hex Sems 10-24 x 7/8"	88052	1
	Includes:			34	CLIP- Wire	12698	1
2	BUSHING- Nylon	12993	2	35	SCREW- Hex Sems 10-24 x 3/4"	88051	1
3	SCREW- Hex Sems 10-24 x 5/8"	88050	9	36	MUFFLER	A-12411-(D)	1
4	TRANSFORMER	A-12298-A	1	37	CAP- Muffler exhaust	12399-T	1
	Includes:			38	SCREW- Hex Sems 8-32 x 3/8"	88041	2
5	SCREW- Hex washer hd.	88270	2	39	ARRESTOR- Spark (Std on 450W only)	A-83887-A	1
6	GROMMET	12181	1	40	SCREW- Cap hex ecc 1/4-20 x 5/8"	82302	2
7	PLATE- Indicating	12793-A	1	41	SCREW- Pan 10-24 x 1/2"	82393	1
8	NUT- Hex centerlock 10-24	81208	3	42	WASHER- Retaining	12789	1
9	RETAINER- Nut	12689	3	43	PULLEY- Starter	A-70189-A	1
10	SWITCH- Toggle	A-12449	1		Includes:		
	Includes:			44	BUSHING- Starter post	94321	1
11	NUT- Hex	72084-A1	1	45	WASHER- Nylon	93882	1
12	LEAD- Module	A-12719	1	46	WASHER- Thrust	94320	2
13	GROMMET	88279	1	47	ROPE- Starter	A-93876	1
14	CONTACT- Ground	70720	1	48	RING- Shield retaining	83878	1
15	RECEPTACLE- Transformer	A-70068	1	49	SHIELD- Spring (outer)	12920-A	1
	Includes:			50	SPRING- Rewind	A-94885	1
	SCREW- Hex washer hd (See No 5)	88270	1	51	SLEEVE- Pin	94894	1
16	CONTACT- Transformer	12788	2	52	LOCK- Rewind spring	12455	1
17	SCREW- Pan hd., plastite #6 x 3/8"	82216	2	53	SHIELD- Spring (inner)	12321-B	1
18	TIE- Cable	12298	1	54	COVER- Starter housing	A-70726-1	1
19	GRIP- Starting rope	A-89852-B	1	55	DECAL- 450	12417	1
	Includes:			56	SCREW- Pan hd 8-32 x 1/2"	82264	3
20	INSERT- Rope retaining	70018-A	1	57	WASHER- Thrust (inner)	83483	1
21	HOUSING- Starter	A-12980	1	58	RACE- Inner	84129-A	1
	Includes:			59	BEARING- Roller	84124	1
22	BUSHING- Starter Rope	87177	1	60	SPROCKET & DRUM	A-85831	1
23	NUT- 3/8-24	81255	1	61	WASHER- Thrust	83850	1
24	STUD- Shoulder	93078	2	62	SHOE- Clutch	A-94126	3
25	WASHER- Flat 3/8" I D	95479	1	63	SPIDER- Clutch	88811	1
26	SPRING- Starter pawl	85375	2	64	SPRING- Clutch	88814-A	3
27	PAWL- Starter	84442-B	2	65	SCREW- Torx	98126	3
28	WASHER- Lock starter pawl	70901	2	66	COVER- Clutch	93826	1
29	ROTOR	70924	1	67	CAP- Muffler (downdraft) (accessory)	A-70038	1
30	WASHER- Flat #8	84101	2		Includes:		
31	SCREW- Hex Sems 8-32 x 1 25"	88045	2	68	PLATE- Baffle	12480	1
32	MODULE & CORE w/switch & core grounds	70709-A	1	69	SCREW- Hex Sems 8-32 x 5/8	88043	2

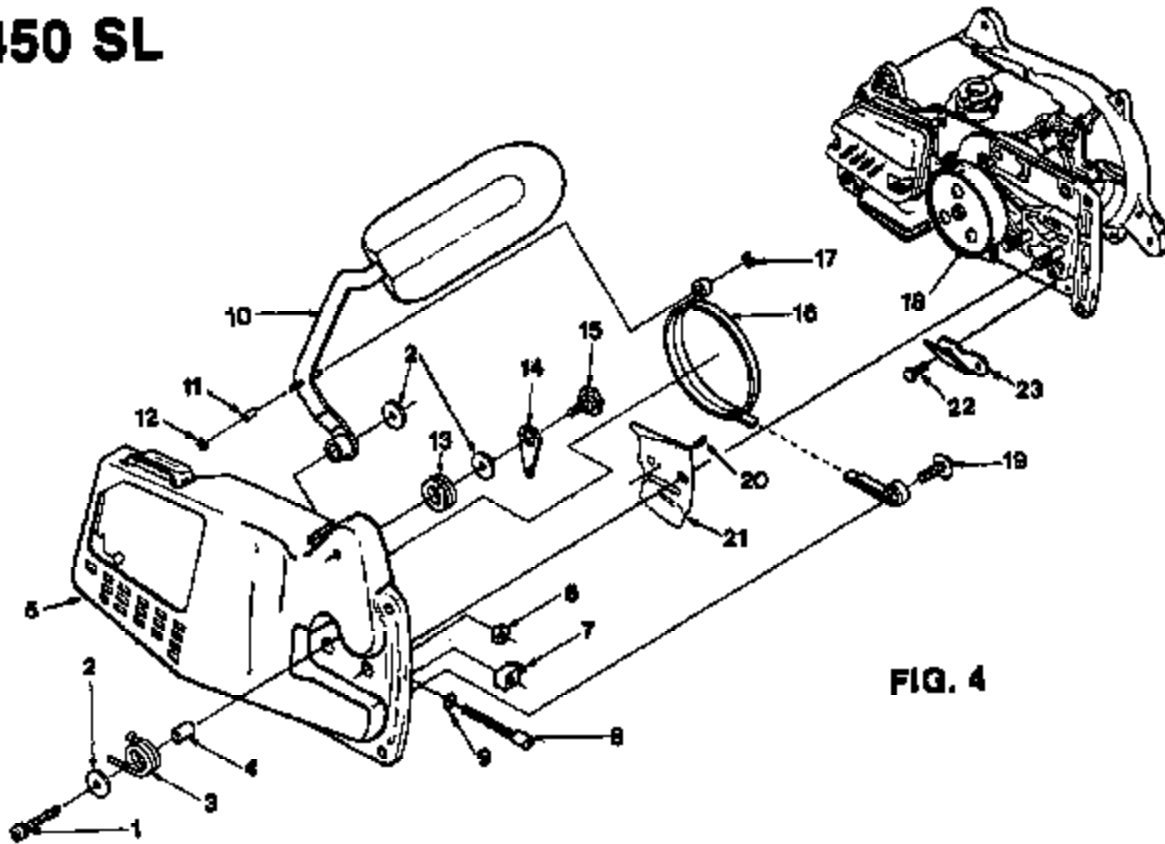
# 450



**450****FIGURE 3**

No.	Description	Part No.	Qty.
1	SCREW- Hex, Sems 10-24 x 5/8"	88060	7
2	SHIELD- Sawdust	12338-2	1
3	SPARK PLUG DJ-6J	66130-B	1
4	GASKET- Intake manifold	12314-B	1
6	MANIFOLD- Intake	12313	1
8	GROMMET	64662	1
7	SCREW- Hex Sems 10-24 x 1/2	88049	2
8	CONNECTOR- Carburetor	12348-A	1
9	SPRING- Garter	12405	1
10	DEFLECTOR- Air	A-70379	1
	Includes:		
11	SEAL	70377	1
12	PISTON & PIN	A-70056-A	1
	includes:		
13	PISTON RING	12309	2
14	CRANKCASE & CYLINDER	A-70980-C	1
	Includes:		
16	LINE- Pulse (3.25 long)	93157-13	1
16	FITTING- Tube	69533	2
17	NUT- Hex, 10-24 Gripco	81208	8
18	SPRING- Check valve	66570	1
19	BALL- Check valve	80051	1
20	"O" RING	74388	2
21	RING- Retaining	12506	1
22	BODY- Automatic oil pump	A-64235	1
23	SPRING- Oil pump	64834	1
24	PLUNGER- Oil pump	A-12366-B	1
25	GASKET	66244-1	2
26	COVER- Oil pump	69224-2C	1
27	SCREW- Pan hd. 6-32 x 3/8	60571	3
28	FITTING- Straight	31733-1	1
29	BOLT- Guide bar	70958	1
30	PIN- Dowel	59751	1
31	BOLT- Guide bar	12387	1
32	SCREW- Hex Sems 10-24 x 1 1/4"	88054	1
33	SCREW- Hex Sems 10-24 x 1 3/8"	88055	4
34	SCREW- Hex Sems 10-24 x 2"	88057	1
35	SCREW- Hex Sems 10-24 x 1"	88053	2
36	CLAMP-	70815	1
37	FILTER (to cover pump vent hole)	70864	1
38	STOP- Chain	70705	1
39	SCREW- Hex Sems 8-32 x 1/2"	88042	2
40	ROD- Connecting	A-70300-1B	1
	Includes:		
41	SCREW- Soc., hd. cap	69919	2
42	BEARING- Caged	A-70793	1
43	KEY- Woodruff	75078	1
44	PLATE- Back	A-12938-C	1
	Includes:		
45	SNUBBER	12928	1
46	SEAL- Main	12306	2
47	RING- Retaining	12310	2
48	BEARING- Roller (main)	63198	2
49	CRANKSHAFT	70269-1A	1
50	LINE- Flexible (auto. oiler pick-up)	A-95202-1	1
51	LINE- Oil	A-70287	1
	Includes:		
62	NUT- Compression	25902	2
53	SLEEVE- Compression	25301	1
	GROMMET (Not shown)	53312-1	1

# 450 SL



**FIG. 4**

**FIGURE 4**

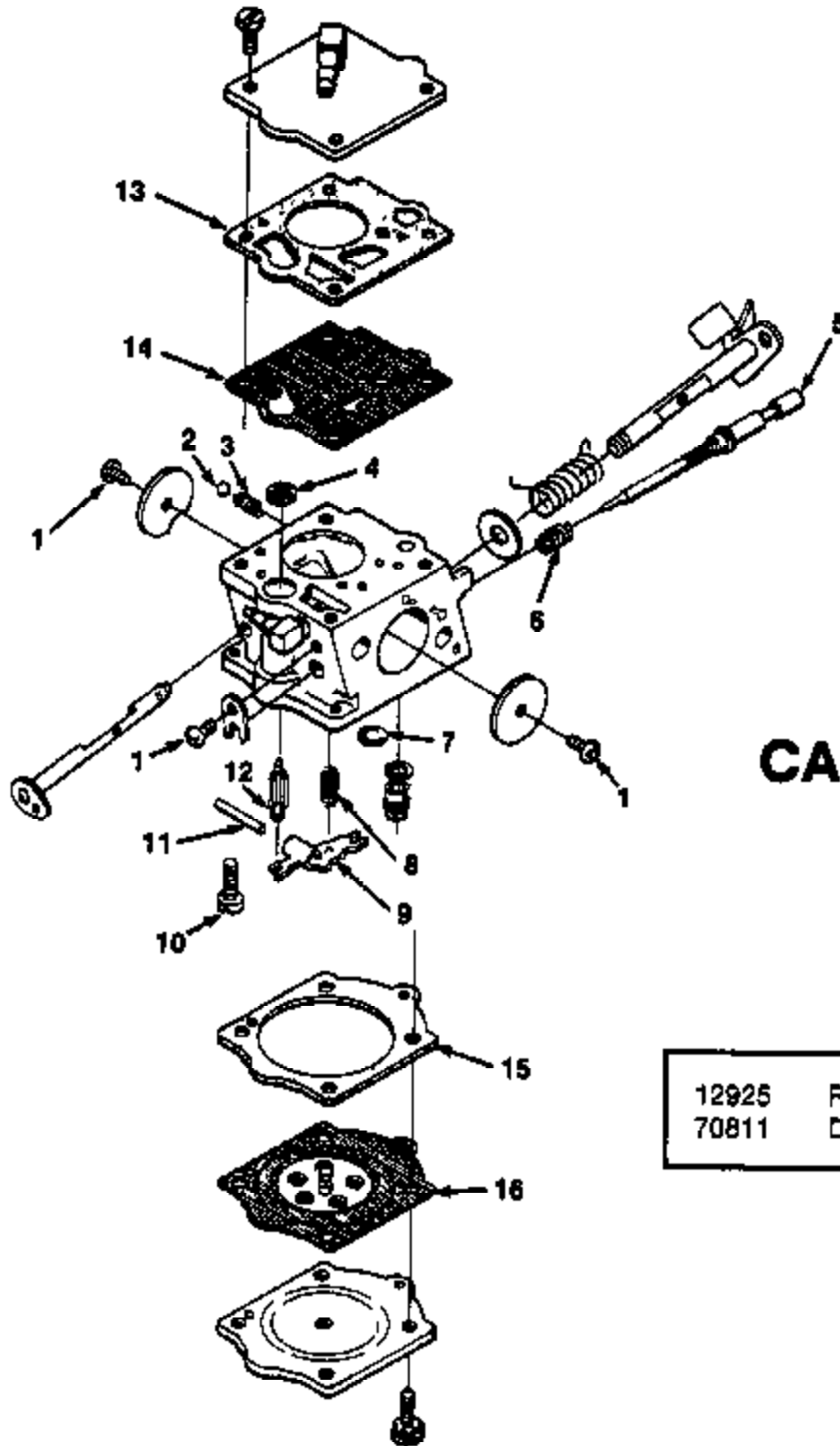
No.	Description	Part No.	Qty.
	Kit- Chain brake	A-93915-B	1
	Includes:		
1	SCREW- Soc. cap hd.	80428-1	1
2	WASHER	93292	3
3	SPRING- Brake lever	93603	1
4	SLEEVE- Lever	93298	1
5	COVER- Drivecase	A-93905-A	1
	Includes:		
6	NUT- Centerlock	81204	1
7	PIN- Guide bar adjusting	93039	1
8	SCREW- Guide bar adjusting	94563	1
9	"O RING"	59074	1
10	LEVER- Brake w/guard	A-93775-A	1
	Includes:		
11	BEARING- Roller	93825	1
12	"E" RING	70825	1
13	SPRING- Locking lever	93603-A	1
14	LEVER- Locking	93802-A	1
15	SCREW- Shoulder	93773	1
16	BRAKE BAND	A-94660	1
	Includes:		
17	"E" RING	60698	1
18	SPROCKET & DRUM	A-96631-2	1
19	SCREW- Pan hd. 1/4-20 x 5/8	82258	1
20	SCREW- Truss hd. 8-32 x 3/8	80548	1
21	PLATE- Guide bar	70400	1
22	SCREW- Hex hd. Sems 8-32 x 1/2"	88042	2
23	STOP- Chain	70705	1

**ACCESSORIES:**

SPROCKET & DRUM (7T-3/8" pitch) A-94116-2



**450**



**FIG. 5**

**CARBURETOR**

**A-70792-B**  
**SDC-54C**

12925	Repair Kit (1-16)
70811	Diaphragm/Gasket Set (13-18)

# 450

## ACCESSORIES AND TOOLS

### ACCESSORIES

Kit- Hand Guard (right)	A-12267-A
Compound (DC4) Silicone Grease for transformer spring	22636-A
Adhesive (14 gram tube) cylinder shield bushing and bumper in back plate	70627
Starter Rope- 250 ft. reel -#5	57084-1
Tubing, Rubber- 10 ft. (fuel & oil)	93112-99
Tubing, Rubber- 10 ft. (pulse line)	93167-99
Tubing, Rubber- 10 ft. (fuel pick-up)	94772-99
Sprocket & Drum (SL units only) (Spur type)	A-94118-2
Silastic- for cylinder flange, muffler gasket and muffler screws.	24823
Kit- Clutch & Drum	A-94156-A
Exchanger- Heat	A-94983

### TOOLS

Bit, Torx- (drive with 1/4" socket-clutch plate screws)	17115-01
Bit, Torx- (drive with 5/16" socket-clutch plate screws)	17115-02
C.D. Test Lamp-Ignition check	A-24994
Key, Hex- Connecting Rod	23528
Puller, Rotor	A-24290
Screwdriver use to drive 58651 wrench	24541
Shim- Yellow 020 (Rotor Air Gap)	24653
Sleeve- Seal (crankshaft assembly)	23759
Tool & Plunger- Piston Pin assembly and removal	A-24871
Tool, Clutch Removal- 3 shoe lined	A-17146
Wrench, Combination (450W)- Guide bar nuts	A-24284
Wrench, Socket- Spark plug	68651
Key, Hex 3/16" for muffler screws-use with 58651 wrench	94624
Wrench- Hex Soc	22126
Tool- Wrench Spanner	A-83791

# NOTES

118324